

Components / Order numbers

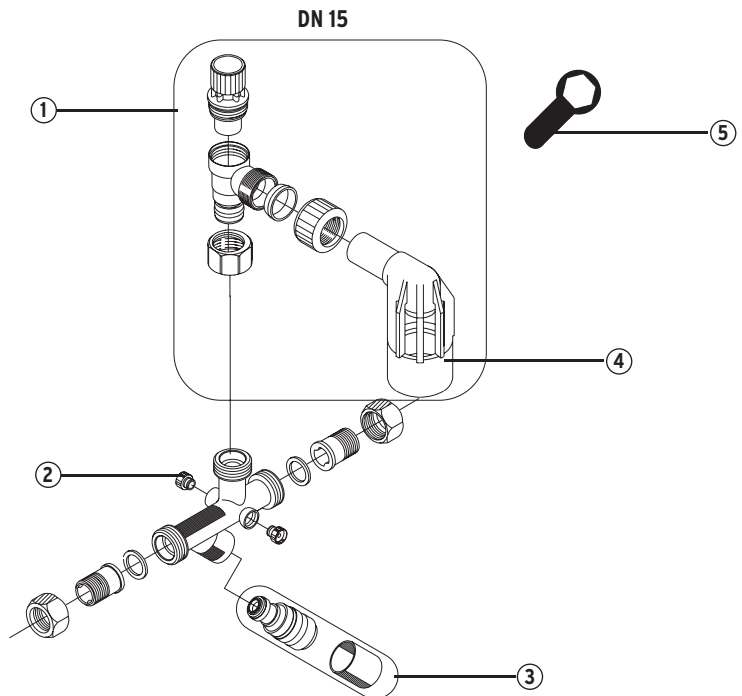
①
Exchangeable pressure relief valve 2115.1
 6 bar
 8 bar
 10 bar

②
Manometer plug

③
Shutt-off valve

④
Tundish

⑤
**Assembly key
 for exchangeable head part**
 max. torque 15Nm



①
**Exchangeable pressure relief
 valve 2115.1**
 6 bar
 8 bar
 10 bar

②
Manometer plug

③
1st shut-off valve

④
2nd shut-off valve

⑤
Tundish

⑥
Check valve

⑦
**Assembly key
 for exchangeable head part**
 max. torque 15 Nm

