

s.85

full port 1/4"-2" hot forged brass ball valves



Quality:

- 24h 100% seal test guaranteed
- Dual sealing system allows valve to be operated in either direction making installation easier
- No metal-to-metal moving parts
- Handle clearly shows ball position
- Silicone-free lubricant on all seals
- Chrome plated brass ball for longer life
- Handle stops on body to avoid stresses at stem

Body:

- Hot forged sand blasted, external nickel plated brass body and cap sealed with Loctite® or equivalent thread sealant
- Finest brass according to EN 12165 and EN 12164 (formerly DIN 17660 and UNI 5705-65) specifications

Stem:

- Blowout-proof nickel plated brass stem
- Pure PTFE adjustable packing gland and reinforced washer for lower torque and easy maintenance

Seals:

- Pure PTFE self-lubricating seats with flexible-lip design

PED Directives:

- According to 97/23 CE module A: it cannot be used with dangerous gases in sizes larger than 25mm



Threads:

- EN 10226-1, ISO 228 parallel female by female threads

Flow:

- Full port to DIN 3357 for maximum flow

Handle:

- Geomet® carbon steel handle with thick PVC dip coating. Handle coating offers both thermal and electrical protection

Working Pressure:

- 40 Bar (600 PSI)
- non-shock cold working pressure

Working Temperature:

- -40°C (-40°F) / +170°C (+350°F)
- Warning: freezing of the fluid in the installation may severely damage the valve

Options:

- Stem extension
- T-handle
- Oval lockable handle
- AISI 430 stainless steel handle
- Patented locking device

Upon Request:

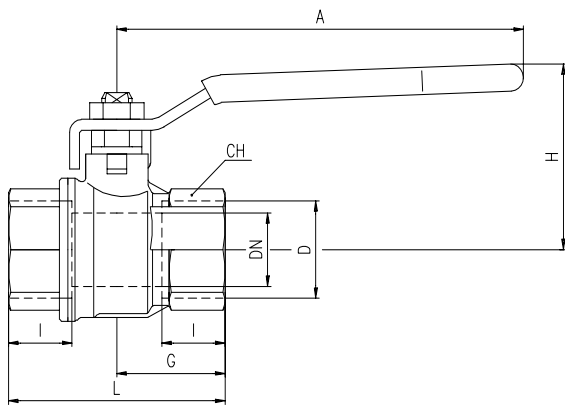
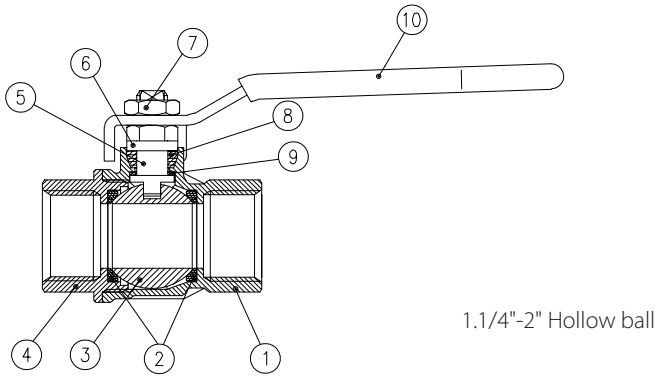
- AISI 316 stainless steel ball and/or stem
- Glass filled PTFE seals
- Custom Design

Approved by or in compliance with:

- GOST-R (Russia)
- Hygiene and epidemic center in Moscow city (Russia)
- UkrSepro (Ukraine)
- RoHS Compliant
- EAC - Declaration of conformity (Russia-Kazakhstan-Belarus)

NOTE: Approvals apply to specific configurations/sizes only.

| Part Description | Q.ty | Material |
|--|------|------------------------|
| 1 Nickel plated body (external treatment) | 1 | CW617N |
| 2 Seat | 2 | PTFE |
| 3 Chrome plated ball | 1 | CW617N |
| 4 Nickel plated end cap (external treatment) | 1 | CW617N |
| 5 Nickel plated stem packing gland design | 1 | CW617N |
| 6 Nickel plated gland nut | 1 | CW617N |
| 7 Geomet® nut | 1 | CB4FF |
| 8 Packing gland seal | 1 | PTFE |
| 9 Washer | 1 | PTFE carbon filled 25% |
| 10 Black PVC coated Geomet® steel handel | 1 | DD11 |

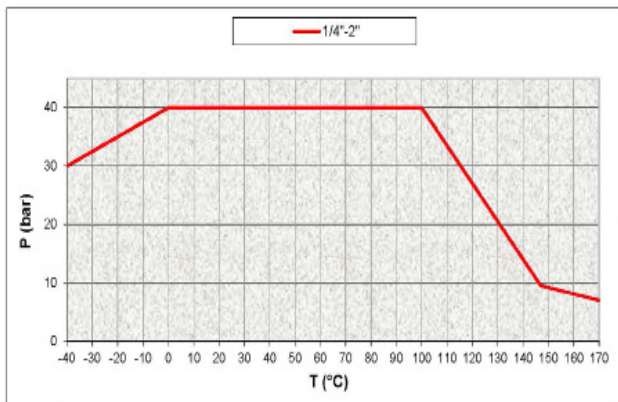


| Code | S85B01 | S85C01 | S85D01 | S85E01 | S85F01 | S85G01 | S85H01 | S85I01 |
|----------|--------|--------|--------|--------|--------|--------|--------|--------|
| D (inch) | 1/4 | 3/8 | 1/2 | 3/4 | 1 | 1 1/4 | 1 1/2 | 2 |
| DN(mm) | 8 | 10 | 15 | 20 | 25 | 32 | 40 | 50 |
| I (mm) | 12 | 12 | 15.5 | 17 | 21 | 23 | 23 | 26.5 |
| L (mm) | 45 | 45 | 59 | 64 | 81 | 93 | 102 | 121 |
| G (mm) | 22.5 | 22.5 | 29.5 | 32 | 40.5 | 46.5 | 51 | 60.5 |
| A (mm) | 82 | 82 | 100 | 120 | 120 | 158 | 158 | 158 |
| H (mm) | 39.5 | 39.5 | 43 | 50.5 | 54.5 | 76 | 82 | 89 |
| CH(mm) | 20 | 20 | 25 | 31 | 40 | 49 | 54 | 68.5 |

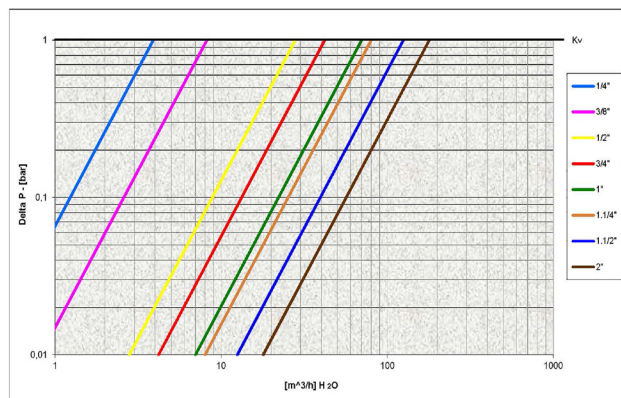
Ball valves are marked CE on handle from 1.1/4" to 2" as follow:
CE XXCODEXX Cat I-A

Ask for additional information on the whole range of **RuB** valves and consult with your supplier for special applications.

Pressure-Temperature Chart



Pressure Drop Chart



The company reserves all rights for the information contained herein. Products may be changed at any time without notice. Any undated reference to a code or standard shall be interpreted as referring to the latest edition. **RuB** and logo are registered trademarks of **RuB**-Rubinetteria utensilerie Bonomi. Other logos and registered trademarks are property of respective owners.