

# s.33

## heavy duty full port 1/4"-2" hot forged brass ball valves



### Quality:

- 24h 100% seal test guaranteed
- Dual sealing system allows valve to be operated in either direction making installation easier
- No metal-to-metal moving parts
- Handle clearly shows ball position
- Silicone-free lubricant on all seals
- Chrome plated brass ball for longer life
- Handle stops on body to avoid stresses at stem

### Body:

- Hot forged sand blasted, nickel plated brass body and cap sealed with Loctite® or equivalent threads sealant
- Finest brass according to EN 12165 and EN 12164 (formerly DIN 17660 and UNI 5705-65) specifications

### Stem:

- Blowout-proof nickel plated brass stem
- Pure PTFE adjustable packing gland and reinforced washer for lower torque and easy maintenance

### Seals:

- Pure PTFE self-lubricating seats with flexible-lip design

### PED Directives:

- According to 97/23 CE module A: it cannot be used with dangerous gases in sizes larger than 25mm



### Threads:

- EN 10226-1, ISO 228 parallel female by female threads

### Flow:

- 100% Full port for maximum flow

### Handle:

- Geomet® carbon steel handle with thick PVC dip coating. Handle coating offers both thermal and electrical protection

### Working Pressure:

- 65 Bar (940 PSI) up to 1/2", 40 Bar (600 PSI) over 1/2"
- non-shock cold working pressure

### Working Temperature:

- -40°C (-40°F) / +170°C (+350°F)
- Warning: freezing of the fluid in the installation may severely damage the valve

### Options:

- Stem extension
- T-handle
- Oval lockable handle
- AISI 430 stainless steel handle
- Patented locking device
- Male by Female threads

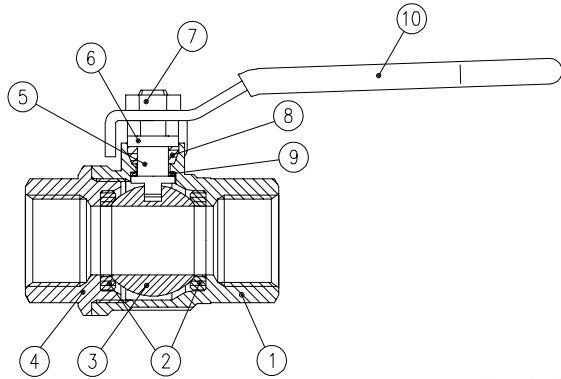
### Upon Request:

- AISI 316 stainless steel ball and/or stem
- Glass filled PTFE seals
- Custom Design

### Approved by or in compliance with:

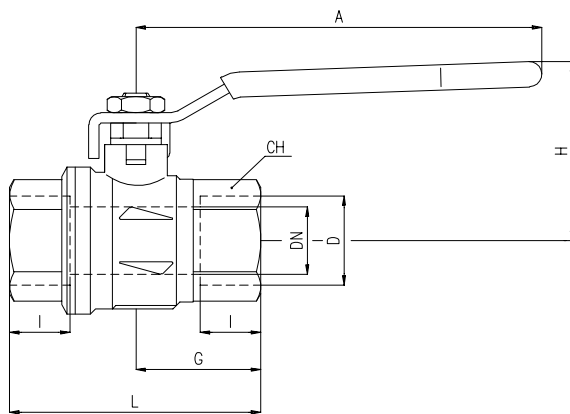
- GOST-R (Russia)
- Hygiene and epidemic center in Moscow city (Russia)
- UkrSepro (Ukraine)
- RoHS Compliant
- EAC - Declaration of conformity (Russia-Kazakhstan-Belarus)

**NOTE:** Approvals apply to specific configurations/sizes only.



1.1/4"-2" Hollow ball

Part Description	Q.ty	Material
1	1	Nickel plated body
2	2	Seat
3	1	Chrome plated ball
4	1	Nickel plated end cap
5	1	Nickel plated stem packing gland design
6	1	Nickel plated gland nut
7	1	Geomet® nut
8	1	Packing gland seal
9	1	Washer
10	1	Black PVC coated Geomet® steel handle

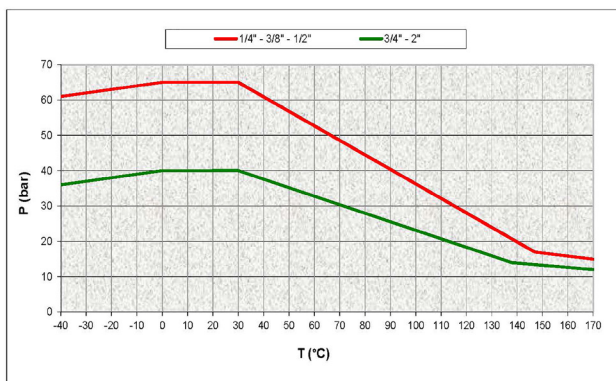


Code	S33B00	S33C00	S33D00	S33E00	S33F00	S33G00	S33H00	S33I00
D (inch)	1/4	3/8	1/2	3/4	1	1 1/4	1 1/2	2
DN (mm)	8	10	15	20	25	32	40	50
I (mm)	12.5	12.5	15.5	18	21	23	24.5	26.5
L (mm)	51	51	61	74.5	90.5	104	117	135
G (mm)	25.5	25.5	30.5	37	45.5	52	59	67.5
A (mm)	82	82	100	120	120	158	158	158
H (mm)	39.5	39.5	43	52.5	57	78	85	92
CH (mm)	22	22	27	32	41	50	55	70
PN (Bar)	65	65	65	40	40	40	40	40

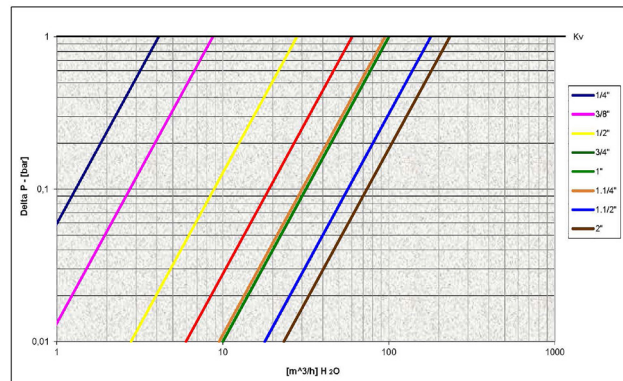
Ball valves are marked CE on handle from 1.1/4" to 2" as follow: CE XXCODEXX Cat I-A

Ask for additional information on the whole range of **RuB** valves and consult with your supplier for special applications.

### Pressure-Temperature Chart



### Pressure Drop Chart



The company reserves all rights for the information contained herein. Products may be changed at any time without notice. Any undated reference to a code or standard shall be interpreted as referring to the latest edition. **RuB** and logo are registered trademarks of **RuB**-Rubinetteria utensilerie Bonomi. Other logos and registered trademarks are property of respective owners.

XCES33 - Rev: 3580